



LAKE SHORE PUBLIC SCHOOLS

NEW EARLY CHILDHOOD AND COMMUNITY CENTER



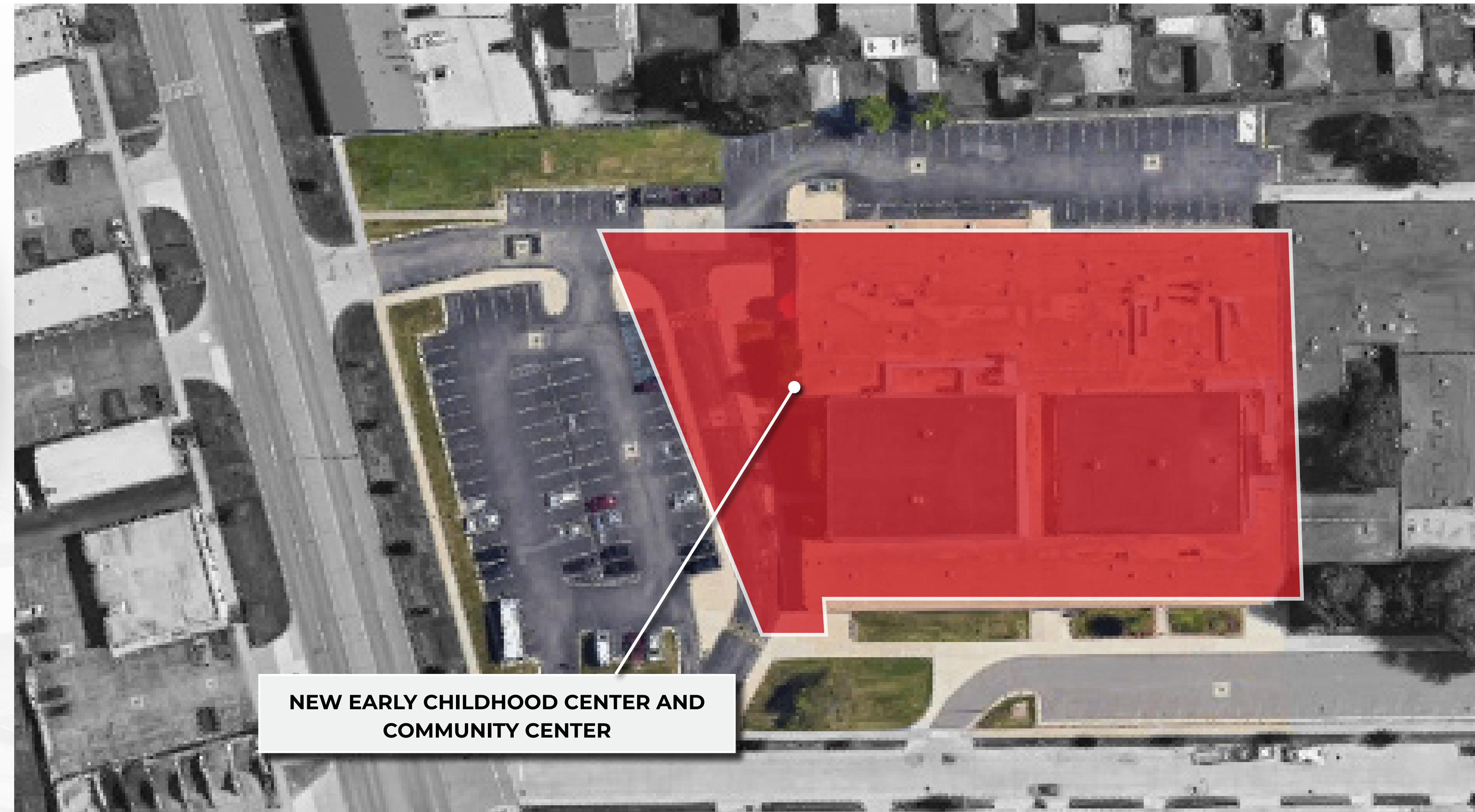
For more information
scan the QR Code



or, contact

**Superintendent,
Dr. Joseph DiPonio**

(585) 285-8480 | jdiponio@lspss.org



**NEW EARLY CHILDHOOD CENTER AND
COMMUNITY CENTER**



COMING SOON:

NEW EARLY CHILDHOOD AND COMMUNITY CENTER

To maximize building and staff efficiencies, the ECC, Community Center, Adult Education, and Senior programming will be relocated to a single, stand-alone facility at the Administrative Center/Board Offices at the Rodgers Elementary School site.

NEW CONSTRUCTION

- Build Early Childhood/Community Center addition (on current Rodgers Elementary School site)

EXTERIOR WORK

- Replace select roofing

INTERIOR WORK

- Renovate areas for Early Childhood program
- Establish Adult Education spaces
- Establish community spaces
- Renovate central administration offices
- Replace select flooring (ECC, Community Center, renovated areas, and the administration offices)
- New doors and hardware including safety locks on classroom doors in the ECC

LIGHTING

- Replace lighting for energy efficiency

TECHNOLOGY AND SAFETY/SECURITY

- Install emergency alert system
- Upgrade classroom safety locking systems
- Enhance video surveillance and access control

SITE PAVING

- Replacement/addition at new ECC site

SITE IMPROVEMENTS

- Upgrade playground with handicap accessible equipment

INSTRUCTIONAL TECHNOLOGY

- Install audiovisual systems in ECC classrooms

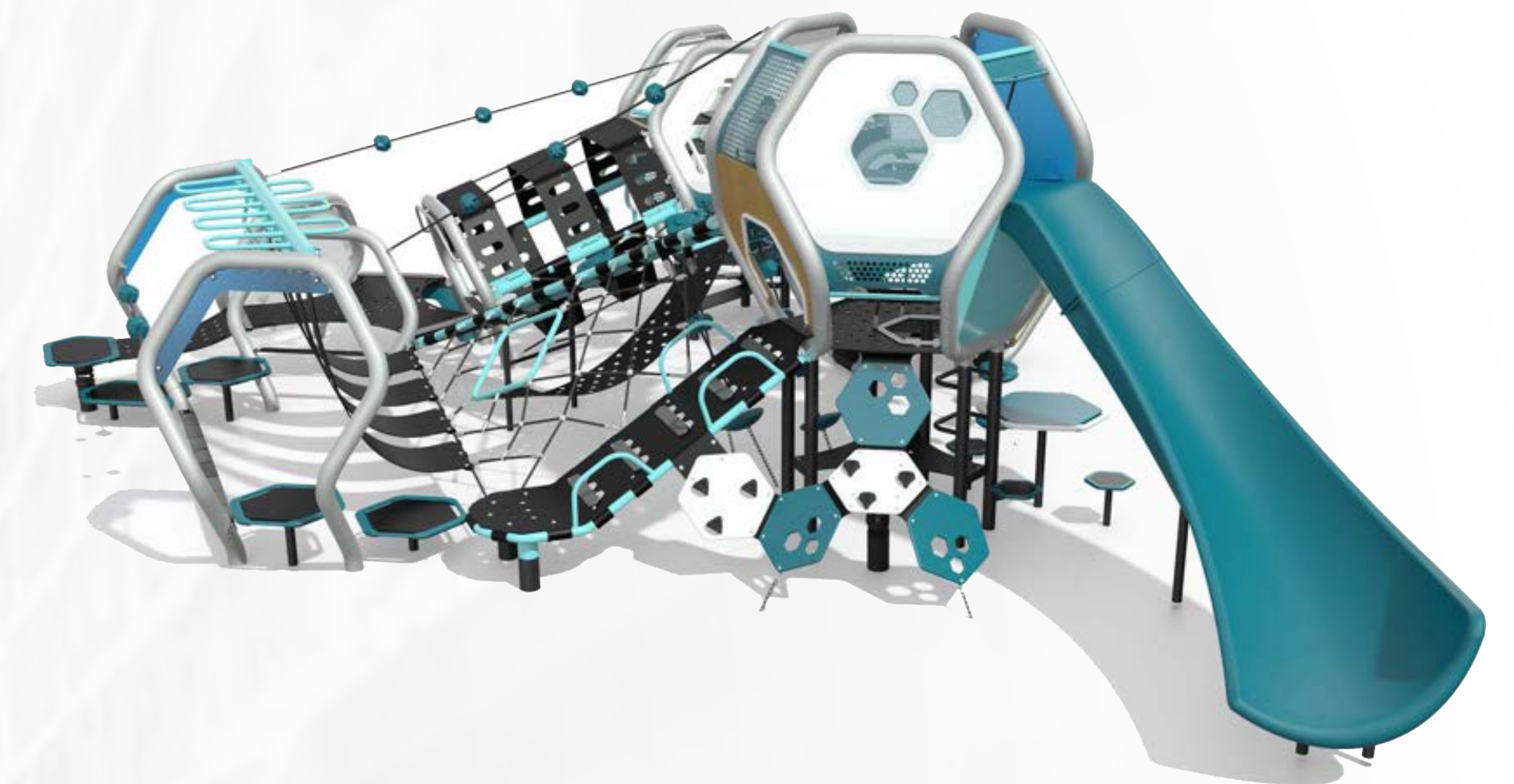
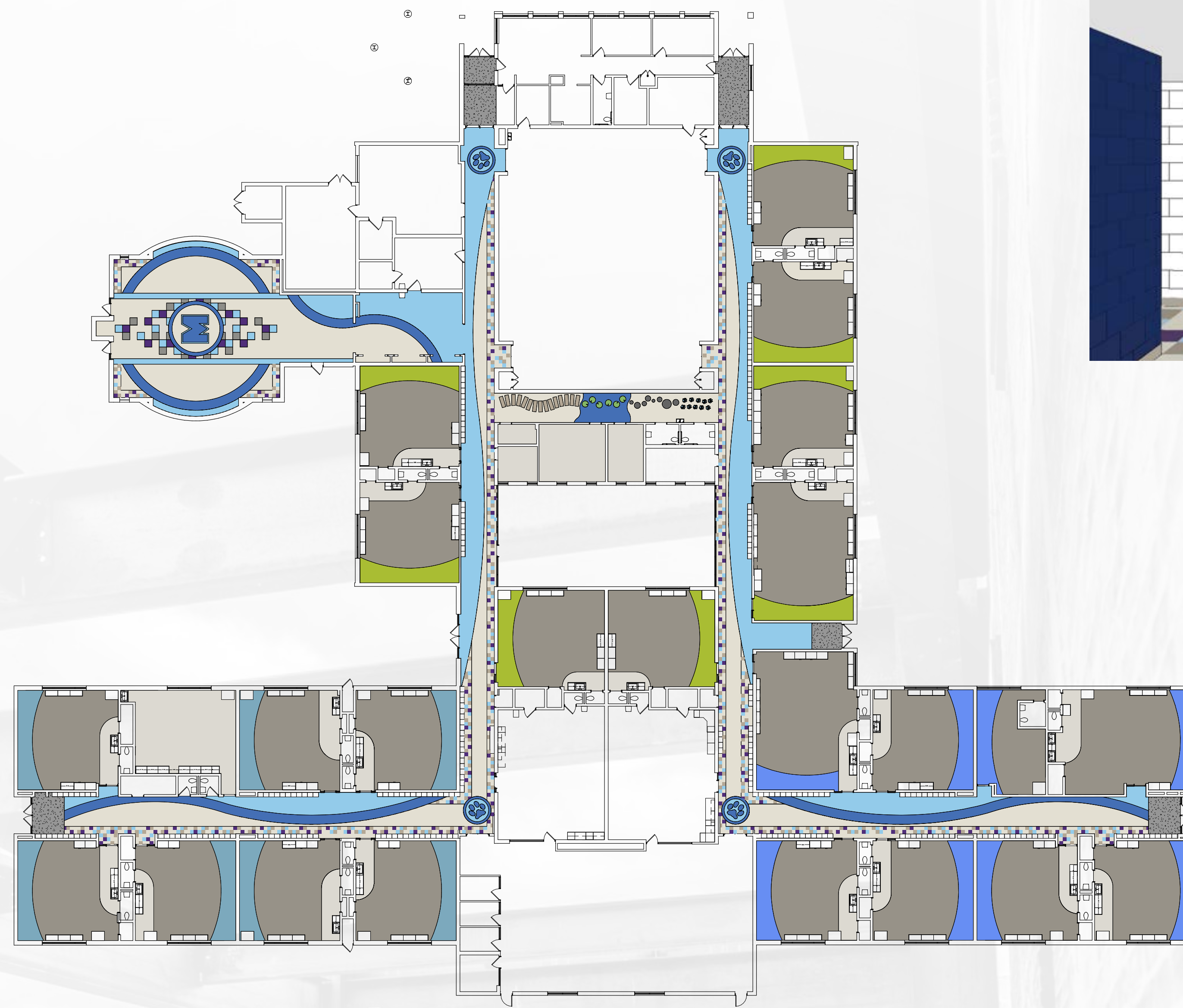
FURNITURE, FURNISHINGS, AND EQUIPMENT

- Replace furniture
- Purchase furniture for newly constructed areas (ECC, Community Center, Adult programming, and administrative offices)



LAKE SHORE PUBLIC SCHOOLS

MASONIC HEIGHTS ELEMENTARY SCHOOL



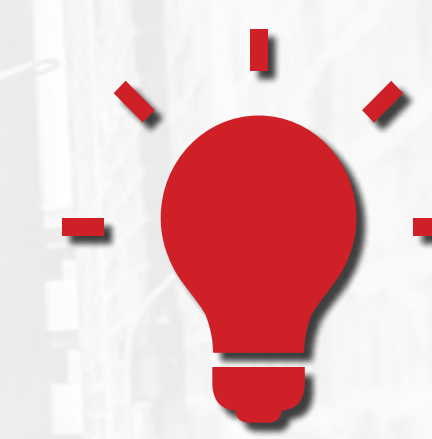
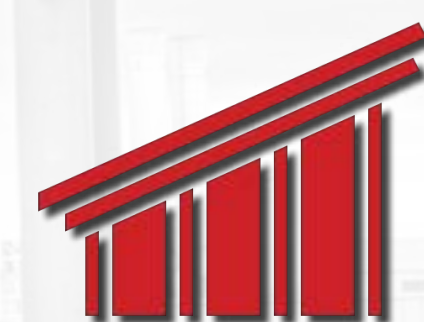
For more information
scan the QR Code



or, contact

**Superintendent,
Dr. Joseph DiPonio**

(585) 285-8480 | jdiponio@lspss.org



WHAT'S COMING TO MASONIC HEIGHTS ELEMENTARY SCHOOL

EXTERIOR WORK

- Improve building exterior
- Replace select roof sections

INTERIOR WORK

- Abate asbestos due to renovations
- Replace classroom and corridor flooring
- Replace select doors and hardware including security locks
- Install new roof access hatch and ladder
- Replace classroom cabinets

PLUMBING

- Replace classroom sinks and plumbing

HVAC SYSTEM

- Replace boiler system

LIGHTING

- Replace classroom fixtures for energy efficiency

SITE PAVING

- Replace failing concrete
- Replace asphalt paving (series three)

TECHNOLOGY AND SAFETY/SECURITY

- Install emergency alert system
- Upgrade classroom safety locking systems
- Enhance video surveillance and access control
- Network and wireless access upgrades

INSTRUCTIONAL TECHNOLOGY

- Purchase (refresh) student mobile devices
- Install classroom sound enhancement system
- Purchase interactive classroom displays

SITE IMPROVEMENTS

- Site work for additions
- Upgrade playground (drainage and equipment) with handicap accessible equipment
- Improve courtyard (remove overgrown vegetation and add a covered space for students)
- Create an outdoor learning environment
- Install walking track for student and community use

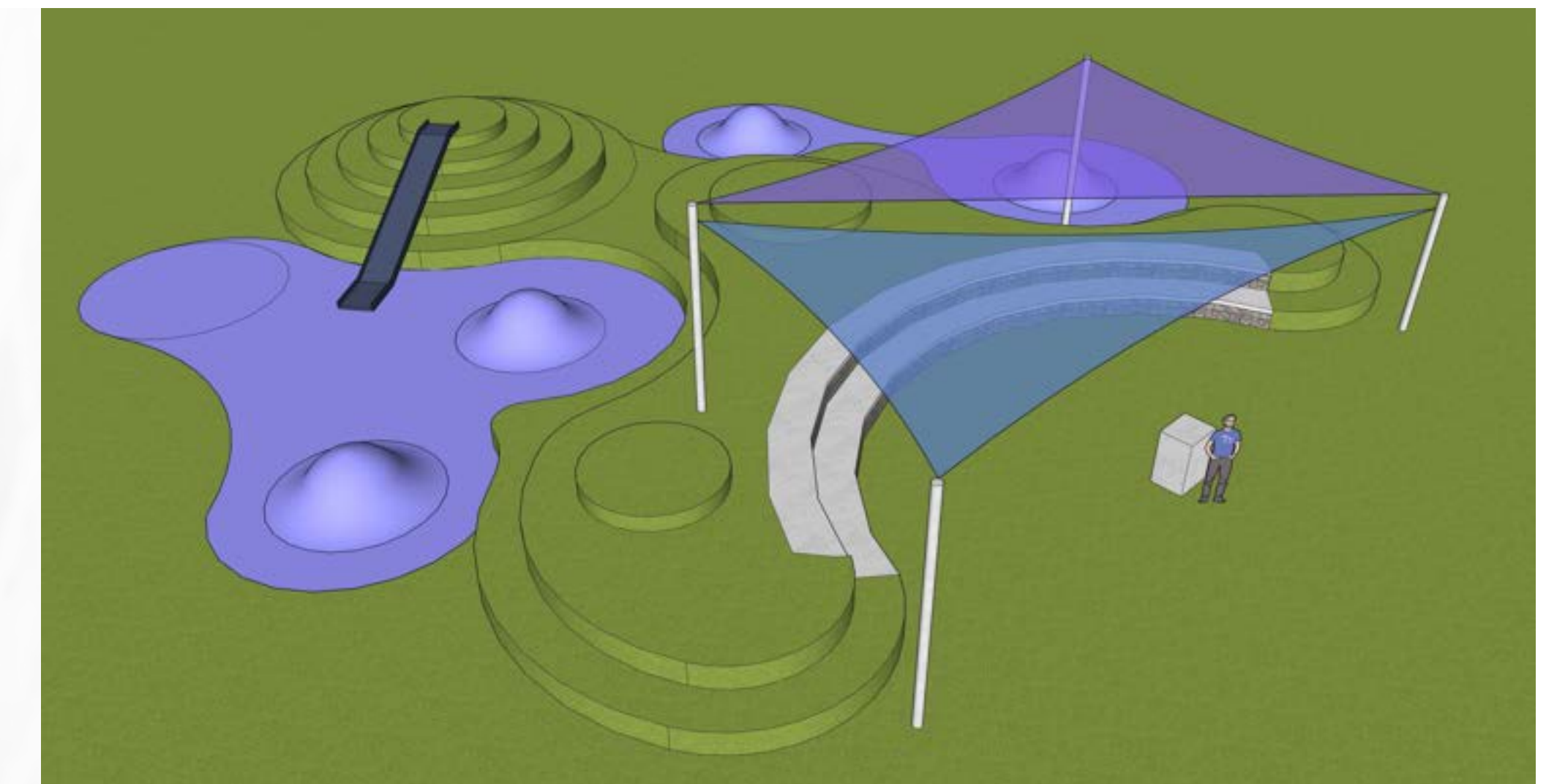
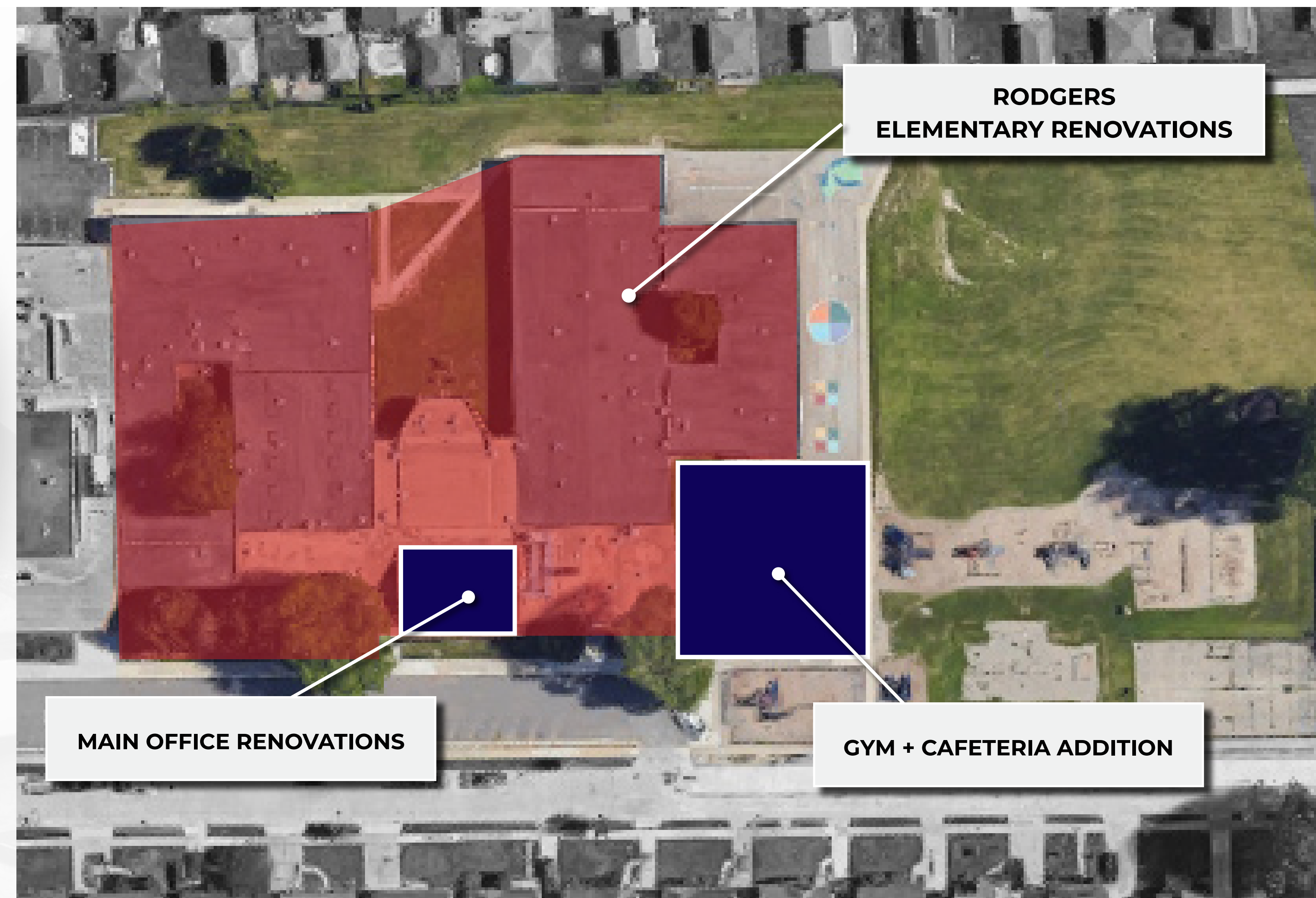
FURNITURE, FURNISHINGS, AND EQUIPMENT

- Purchase furniture for addition
- Purchase furniture for an outdoor learning environment



LAKE SHORE PUBLIC SCHOOLS

RODGERS ELEMENTARY SCHOOL



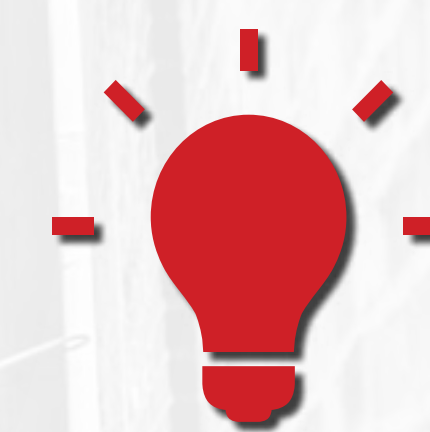
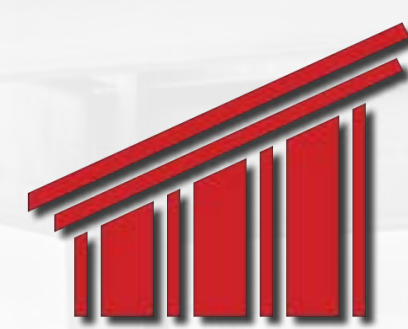
For more information
scan the QR Code



or, contact

**Superintendent,
Dr. Joseph DiPonio**

(585) 285-8480 | jdiponio@lspss.org



WHAT'S COMING TO RODGERS ELEMENTARY SCHOOL

NEW CONSTRUCTION

- Construct new gym and cafeteria addition

EXTERIOR WORK

- Replace select roofing
- Improve the courtyard

INTERIOR WORK

- Redesign the school to transform it into an elementary space
- Replace classroom flooring and cabinets
- Replace corridor flooring
- Replace select doors and hardware, including safety locks

PLUMBING

- Replace classroom sinks, water fountains, and mixing valves
- Replace the boiler

LIGHTING

- Replace classroom lighting for energy efficiency

SITE PAVING

- Create a dedicated bus loop
- Improve traffic flow and drop-off/pick-up areas

TECHNOLOGY AND SAFETY/SECURITY

- Install emergency alert system
- Upgrade classroom safety locking systems
- Enhance video surveillance and access control

SITE IMPROVEMENTS

- Improve the courtyard
- Upgrade the playground with handicap accessible equipment
- Create an outdoor learning environment

INSTRUCTIONAL TECHNOLOGY

- Replace classroom technology

FURNITURE, FURNISHINGS, AND EQUIPMENT

- Replace classroom furniture



LAKE SHORE PUBLIC SCHOOLS

VIOLET ELEMENTARY SCHOOL



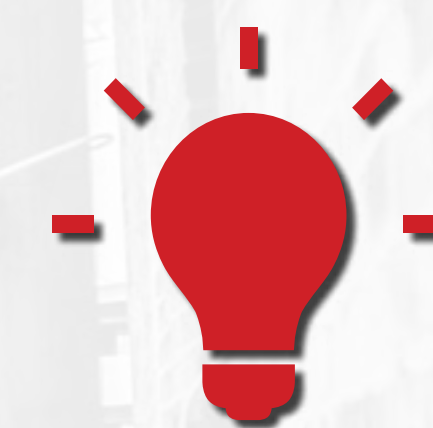
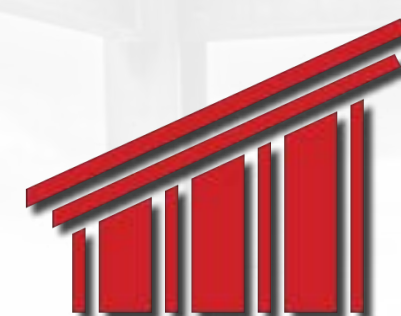
For more information
scan the QR Code



or, contact

**Superintendent,
Dr. Joseph DiPonio**

(585) 285-8480 | jdiponio@lsps.org



WHAT'S COMING TO VIOLET ELEMENTARY SCHOOL

NEW CONSTRUCTION

- Build secure main office addition

EXTERIOR WORK

- Improve building exterior
- Build entrance canopy
- Replace select roof sections

INTERIOR WORK

- Abate asbestos due to renovations
- Remodel/reconfigure main office
- Replace classroom and corridor flooring
- Replace select doors and hardware including security locks
- Replace classroom cabinets

PLUMBING

- Replace classroom sinks

HVAC SYSTEM

- Replace boiler system
- Install rooftop unite for the teachers' lounge

LIGHTING

- Replace classroom fixtures for energy efficiency
- Replace exterior lighting for safety due to parking lot changes

SITE PAVING

- Replace failing concrete
- Build new asphalt parking lot

TECHNOLOGY AND SAFETY/SECURITY

- Install emergency alert system
- Upgrade classroom safety locking systems
- Enhance video surveillance and access control
- Network and wireless access upgrades

SITE IMPROVEMENTS

- Site work for additions
- Replace landscape at the front entrance to improve drainage issues
- Upgrade playground (drainage and equipment)
- Improve courtyard (remove overgrown vegetation and add a covered space for students)
- Create an outdoor learning environment

INSTRUCTIONAL TECHNOLOGY

- Purchase (refresh) student mobile devices
- Install classroom sound enhancement system
- Purchase interactive classroom displays

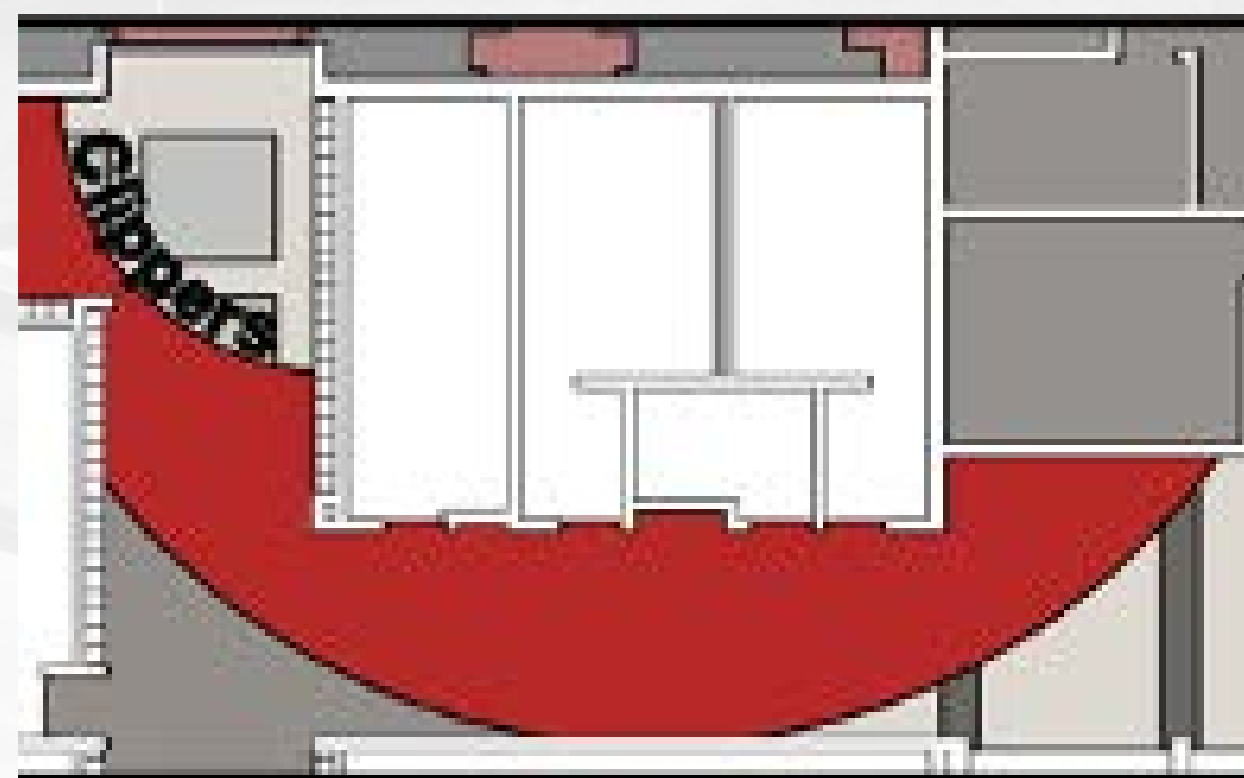
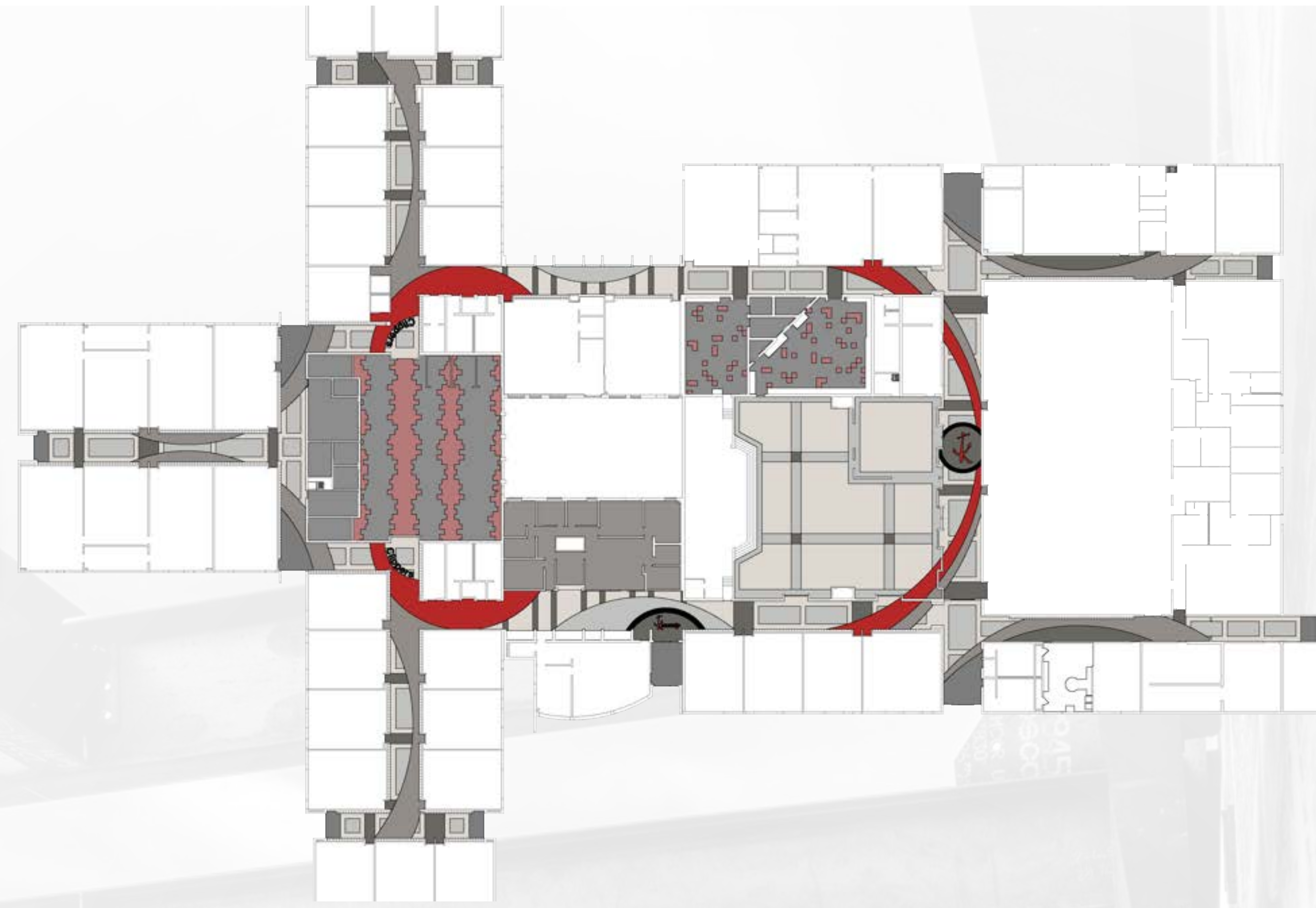
FURNITURE, FURNISHINGS, & EQUIPMENT

- Purchase furniture for addition
- Purchase furniture for an outdoor learning environment
- Purchase classroom furniture (desks, chairs, etc.)



LAKE SHORE PUBLIC SCHOOLS

KENNEDY MIDDLE SCHOOL



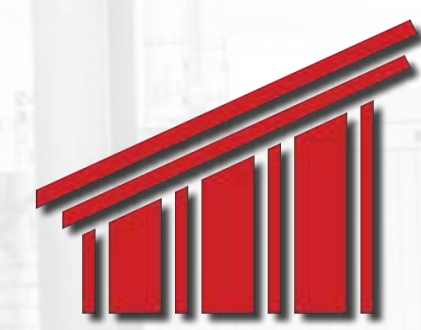
For more information
scan the QR Code



or, contact

**Superintendent,
Dr. Joseph DiPonio**

(585) 285-8480 | jdiponio@lspss.org



WHAT'S COMING TO KENNEDY MIDDLE SCHOOL

NEW CONSTRUCTION

- Build concessions building by new "home" fields

EXTERIOR WORK

- Replace metal panels above windows to correct structural issues
- Replace lintels (support above windows or doors)
- Replace classroom windows
- Replace select roof sections

INTERIOR WORK

- Abate asbestos due to renovations
- Replace classroom and corridor flooring
- Replace select doors and hardware including security locks
- Renovate band/choir rooms

HVAC SYSTEM

- Replace boiler system

TECHNOLOGY AND SAFETY/SECURITY

- Install emergency alert system
- Upgrade classroom safety locking systems
- Enhance video surveillance and access control
- Network and wireless access upgrades

LIGHTING

- Replace classroom fixtures for energy efficiency
- Replace exterior lighting at new parking lot

SITE PAVING

- Replace failing concrete
- Build a new parking lot by the new baseball field
- Replace asphalt in select areas as needed

SITE IMPROVEMENTS

- Site work for new concessions building construction
- Create an outdoor learning environment
- Improve courtyard (remove overgrown vegetation and add a covered space for students)
- Build a varsity-quality home field for use by students and community
- Build baseball stadium with dugouts and bleachers

INSTRUCTIONAL TECHNOLOGY

- Purchase (refresh) student mobile devices
- Purchase interactive classroom displays

FURNITURE, FURNISHINGS, AND EQUIPMENT

- Purchase furniture for an outdoor learning environment
- Purchase classroom furniture (desks, chairs, etc.)



LAKE SHORE PUBLIC SCHOOLS

LAKE SHORE HIGH SCHOOL



For more information
scan the QR Code



or, contact

**Superintendent,
Dr. Joseph DiPonio**

(585) 285-8480 | jdiponio@lspss.org

WHAT'S COMING TO LAKE SHORE HIGH SCHOOL

NEW CONSTRUCTION

- Build front entrance addition on 13 Mile Rd.
- Enclose courtyard

INTERIOR WORK

- Abate asbestos due to renovations
- Construct fire separations due to courtyard infill
- Renovate spaces for student services offices, student dining, and administrative office area
- Renovate student commons
- Renovate collaboration spaces
- Renovate skilled trades/career tech
- Replace classroom and corridor flooring
- Replace select doors hardware/security locks
- Replace pool lockers
- Replace pool scoreboard
- Renovate band/choir rooms
- Replace classroom cabinets

EXTERIOR WORK

- Replace select roof sections
- Replace lintels (support above windows or doors)
- Install new entrance canopy at the main entrance
- Address structural issues

PLUMBING

- Replace pool locker room shower fixture

HVAC SYSTEM

- Replace boiler system
- Replace pool equipment
- Replace air handling units in locker rooms, auditorium, the existing gym, and the choir room

LIGHTING

- Replace classroom fixtures for energy efficiency
- Replace exterior lighting due to renovations

TECHNOLOGY AND SAFETY/SECURITY

- Install emergency alert system
- Upgrade classroom security locking systems
- Enhance video surveillance and access control
- Network and wireless access upgrades

SITE PAVING

- Replace concrete at the new front entrance
- Add parking at the front entrance on 13 Mile Road

SITE IMPROVEMENTS

- Site work for front office addition
- Replace landscaping at the front entrance to improve drainage issues
- Improve courtyard (remove overgrown vegetation and add a covered space for students)
- Create an outdoor learning environment
- Replace synthetic turf
- Resurface synthetic track
- Build a softball field